

CAMERA INSTALLATION

To check the complete user manual and free PC CMS software (CMS Lite), please scan the QR code or go to www.surveillance-download.com/user/m5447.swf



TYPE1



Standard package



Camera



Instructions

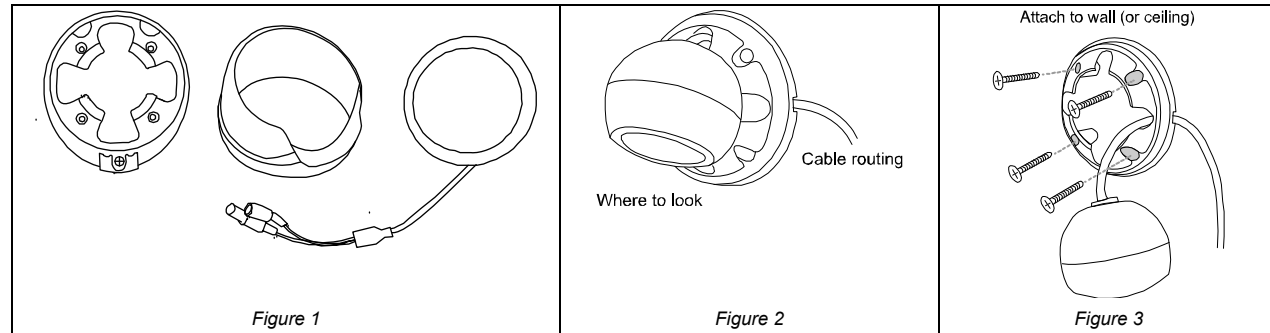


Accessories

Step1: Disassemble the camera case into three parts as illustrated in *Figure 1*.

Step2: Locate the base on the place you would like to install the camera; make sure the cable can be arranged properly in the base. (Refer to *Figure 2*)

Step3: Drill 4 holes and screw the base to the wall (or ceiling).



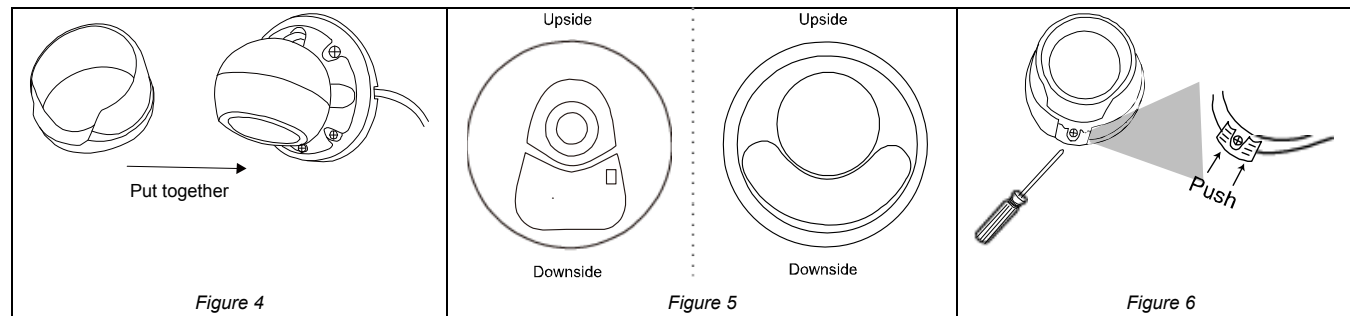
Step4: Put together the bracket and the lens, and slightly adjust the camera lens. Make sure it faces your target surveillance area.

Note: Do not install the lens opposite down. (Refer to *Figure5*)

Step5: Screw the base tight. (Refer to *Figure 6*).

Step6: Power on the camera and fine-tune the viewing angle.

For the motorized vari-focal type, please go to the section, "**ADJUST FOCAL LENGTH & FOCUS**", to know how to adjust focal length and focus remotely.



■ TYPE2



▼ Standard package



Camera

Installation
Guide

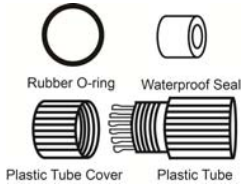
Instructions



Wrench



Screws, Wall Plugs,
Rubber Rings (×3)



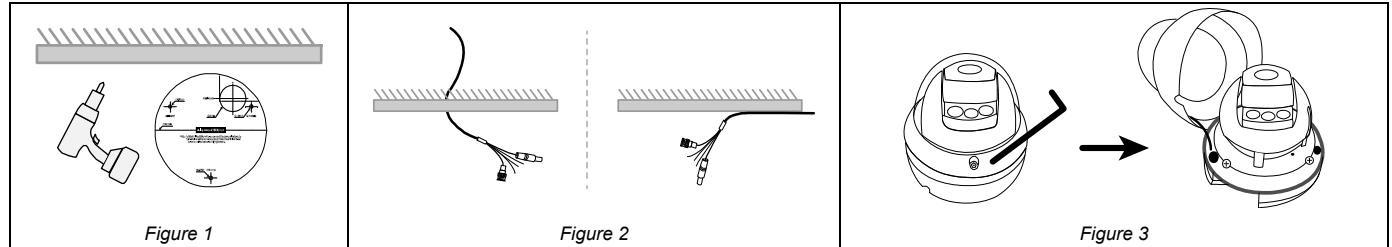
Screws & wall plugs

Step1: Find the installation sticker on the sales package, and paste it to where you want to install this camera. Then, drill screw holes as indicated on the sticker (Figure 1).

Note: The installation sticker could also be downloaded from www.surveillance-download.com/user/542_installation_sticker.pdf.

Step2: Arrange the cables to be connected as shown in Figure 2 depending on the installation location for installation later.

Step3: Remove the dome cover by using the wrench supplied within the sales package, and find the three screw holes on the camera base.

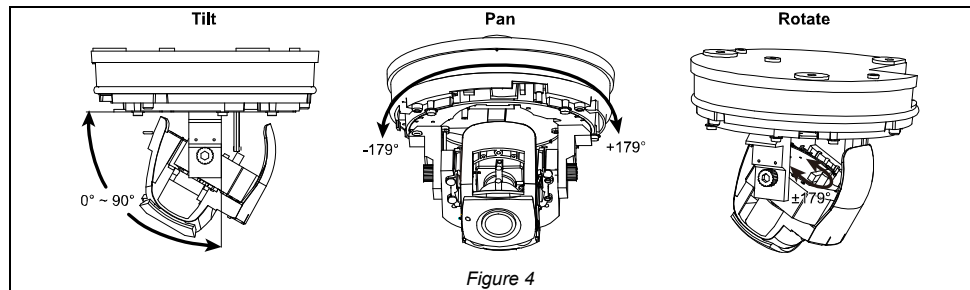


Step4: Connect the cables.

- A waterproof kit for Rj45 network cable might be provided in the sales package. Please check the section “**WATERPROOF KIT**” to know how to use it.
- To connect alarm devices, a terminal block might be provided in the sales package. Please connect the terminal block first and start wiring. Then, align the screw holes on the camera base with the holes drilled in Step1, and install the camera.

Note: Three rubber rings are provided within the sales package. They should be used with the screws during installation for waterproof purposes.

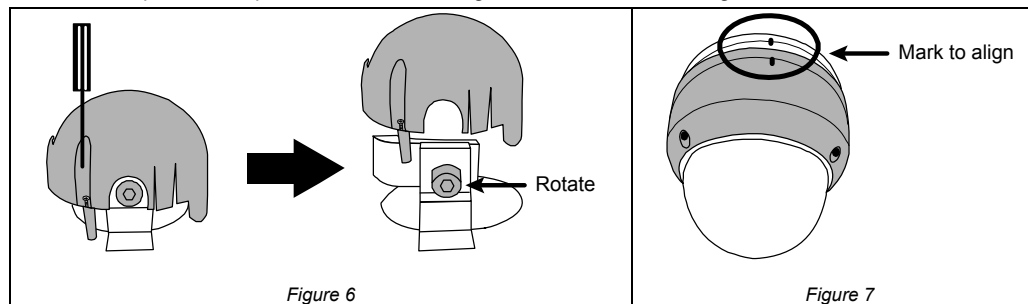
Step5: Adjust the viewing angle of the camera.



To adjust the angle vertically, remove the black shield as indicated in Figure 6, and rotate the knobs on both sides to loosen the tilt mechanism and move the lens. Then, secure the tilt mechanism by fasten the knobs to fix the angle.

Step6: Find the mark as indicated below on both the dome cover and the camera base. Align these two marks to replace the dome cover back to the camera, as illustrated in Figure 7.

Note: Please wipe the inner part of the dome cover against the lens for clear images.



■ CABLE

Cable	Description
Power cable	DC12V power supply.
RJ45 network cable*	Connect it to a RJ45 cable.
GND	Used with external alarm device connection or hardware reset.
RESET	Reserved for hardware reset. Remove the insulating coating of the wire, and twist it with the GND wire together to reset the camera to its factory values.
Alarm-in**	Reserved for hardware reset. Remove the insulating coating of the wire, and twist it with the GND wire together to reset the camera to its factory values.
Alarm-out**	Reserved for hardware reset. Remove the insulating coating of the wire, and twist it with the GND wire together to reset the camera to its factory values.
Line-in**	Colored as blue, used to connect to a microphone for audio input.
Line-out**	Colored as green, used to connect to a speaker for audio output.

* For PoE (IEEE802.3af) installation, make sure your network cable has the maximum cable resistance of 20Ω, such as CAT.5e or CAT.6 cables, to conform to the standard of IEEE802.3af.

** Optional

■ DEFAULT VALUES

IP address	192.168.1.10
Port number	88
User name	admin
Password	admin

It's strongly recommended to change the default user name and password before using the camera to keep your account safe.

To change the default account, log into the camera, and go to **Config. → General → Account**. You can create a new account and remove the default one if needed.

■ ADJUST FOCAL LENGTH & FOCUS *(For motorized-lens models only)*




To remotely adjust focal length and focus of the camera, access the camera from Internet Explorer.

Note: The default camera IP address is 192.168.1.10, the port number is 88, and the user name and password are both admin.

To search the IP address and port number, you could download our IP scan tool from

www.surveillance-download.com/user/m5447.swf

In the tab of "Live View", you'll see the icons in the control panel area as below:

	Zoom Tele / Zoom Wide	Click to zoom in on the image to the largest / zoom out on the image to its original size.
	Max Zoom Tilt / Max Zoom Wide	Click to zoom in / out the image.
	Focus Far / Near	Click to adjust the focus of the image.

Note: You can also adjust the focal length and the focus by accessing to the NVR with PTZ controlling. For more detail, please refer to the NVR manual.

■ INSERT A MICRO SD CARD *(For selected models only)*

The data originally saved in the microSD card (if any) will be removed after inserting it to the camera.

The camera doesn't support hot-swapping. Please insert or remove the microSD card with power disconnected.

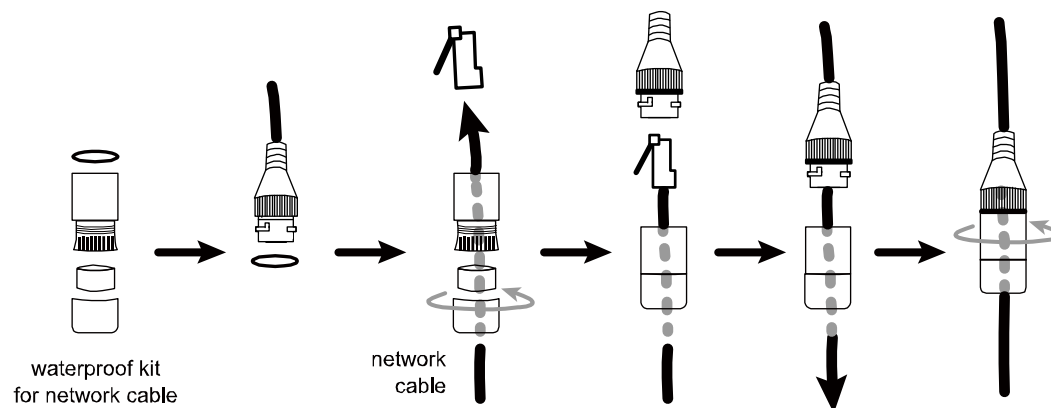
Please follow the directions in the below graphic to insert MicroSD card properly:

For Type 2



■ WATERPROOF KIT *(For selected models only)*

For network cable

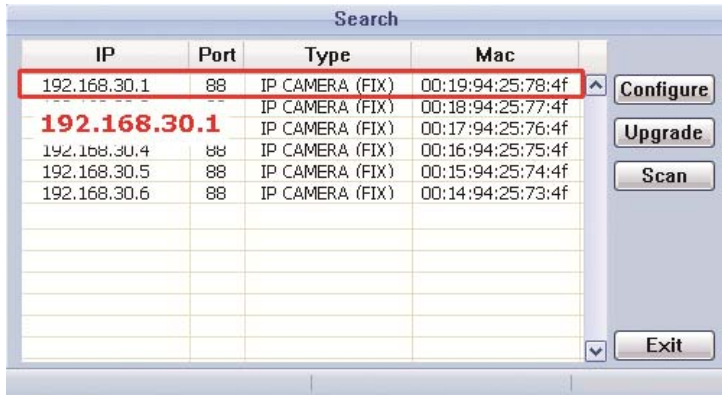


■ CAMERA CONFIGURATION

Step1: Connect this camera to your NVR as described in "HD System Connection".

Step2: Connect PC to the HUB connected to your camera(s) with RJ45 network cable.

Step3: Search available devices with "IPScan.exe"; to download "IPScan.exe", please visit www.surveillance-download.com/user/IPscan.zip.



Step4: After searching, set your PC in the same network segment as the specific camera you want to access, such as "192.168.30.xxx" (xxx could be 0~255) in our example

Step5: Note down the IP address and port number of the camera you want to access, such as "192.168.30.1" and "88" in our example.

Step6: Open Internet Explorer on the PC, and enter the IP address and port number in the URL column to access the camera. The format is http://ipaddress:portnum, such as http://192.168.30.1:88 in our example.

Step7: Enter the default user name (admin) and password (admin) to access the camera. Then, go to "Config" on the top right corner for more advanced configurations.

■ SYSTEM CONNECTION

1. Connect IP cameras and a monitor to the NVR, and power on the NVR, as illustrated below.

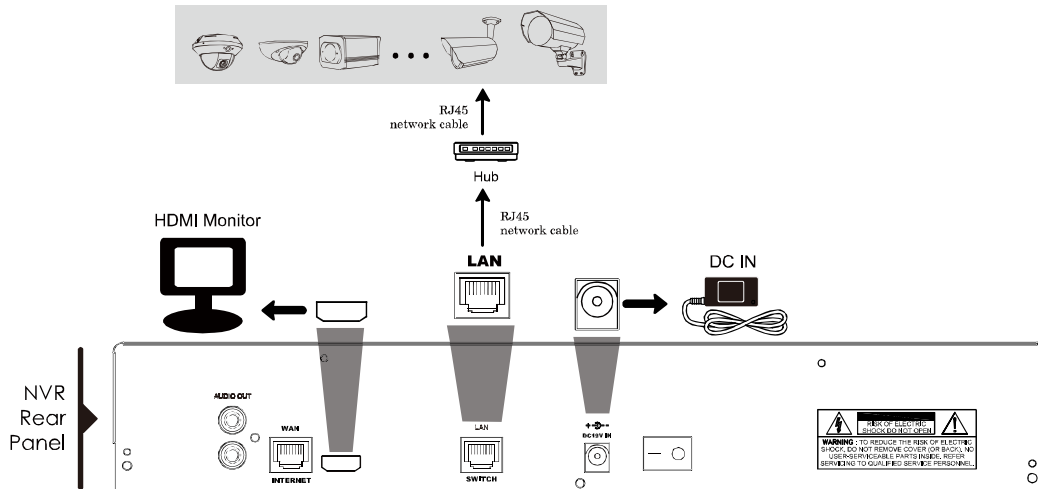
Note: Local connection only allows monitoring locally. To monitor from anywhere other than the NVR is installed, please connect your NVR to Internet.

2. Wait till each camera is configured automatically and you will see camera images on the monitor soon.

Note: Local connection only allows monitoring locally. To monitor from anywhere other than the NVR is installed, please connect your NVR to Internet.

Type1

Connect IP cameras
(as many as the NVR supports):



Type2

Connect IP cameras
(as many as the NVR supports):

